

**How to find Villa Eyleen**  
**3107 SW 29th Ave. 33914 Cape Coral**

**Route 1: Travel time apprx. 30-35 min via 2. bridge:**

From the airport, take I75 North towards Tampa

Second exit north then exit towards Cape Coral 884 Colonia Blvd.

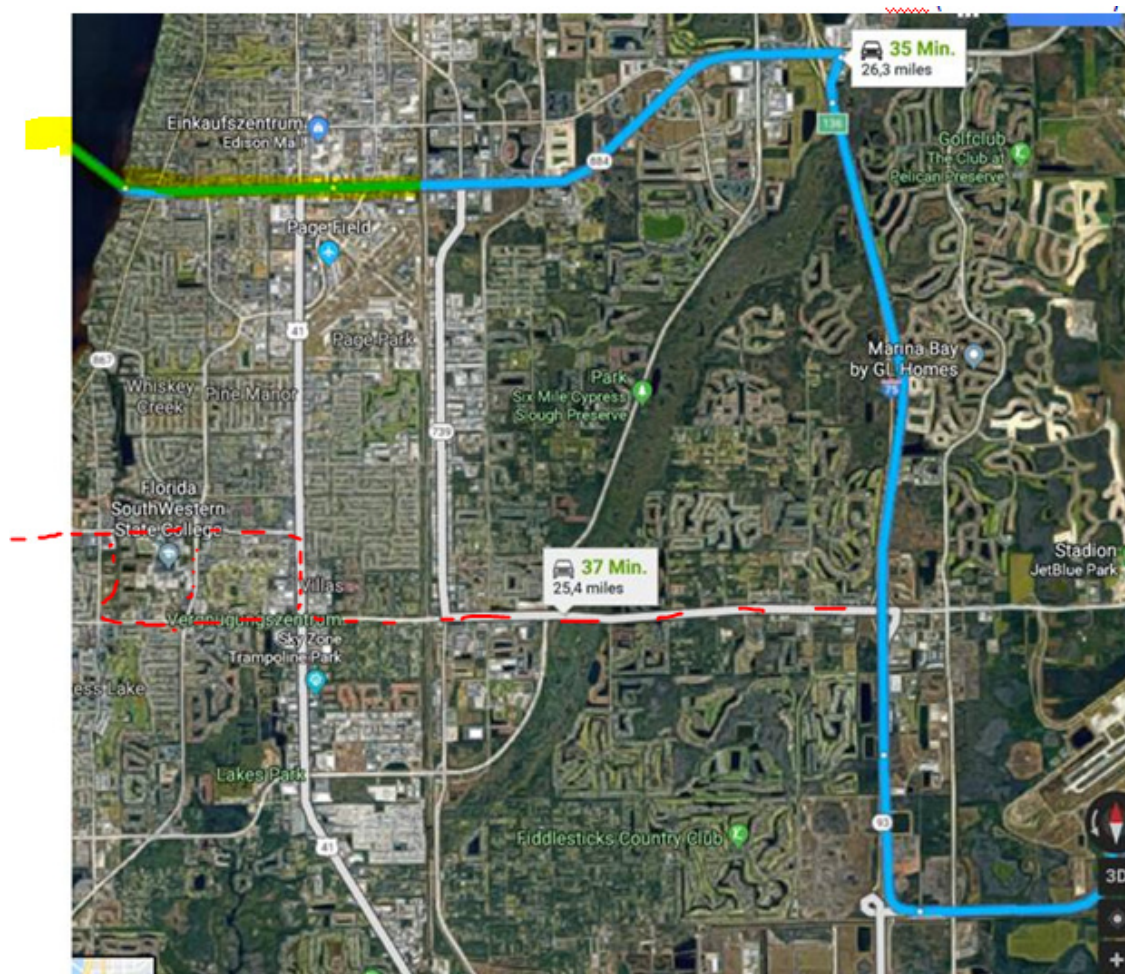
Stay on this road cross the bridge the street automatically goes into the Veteran PKWY. Then drive through Cape Coral all the way to the end, crossing the intersections Santa Barbara, Skyline, and Chiquita Blvd then turn left into Surfside Blvd South. On the left side you see an Outer Patient Center and on the right the Surfside shopping center (green roofs). Best way is to stay on Surfside blvd for about 2 miles until the 31th Ln street shows up at the left, turn left into it and next left again on 29th Ave (see yellow line at picture 2).

Or after about 1 mile on the Surfside directly behind the bridge turn left into the 29th Ave (see red line picture 2)

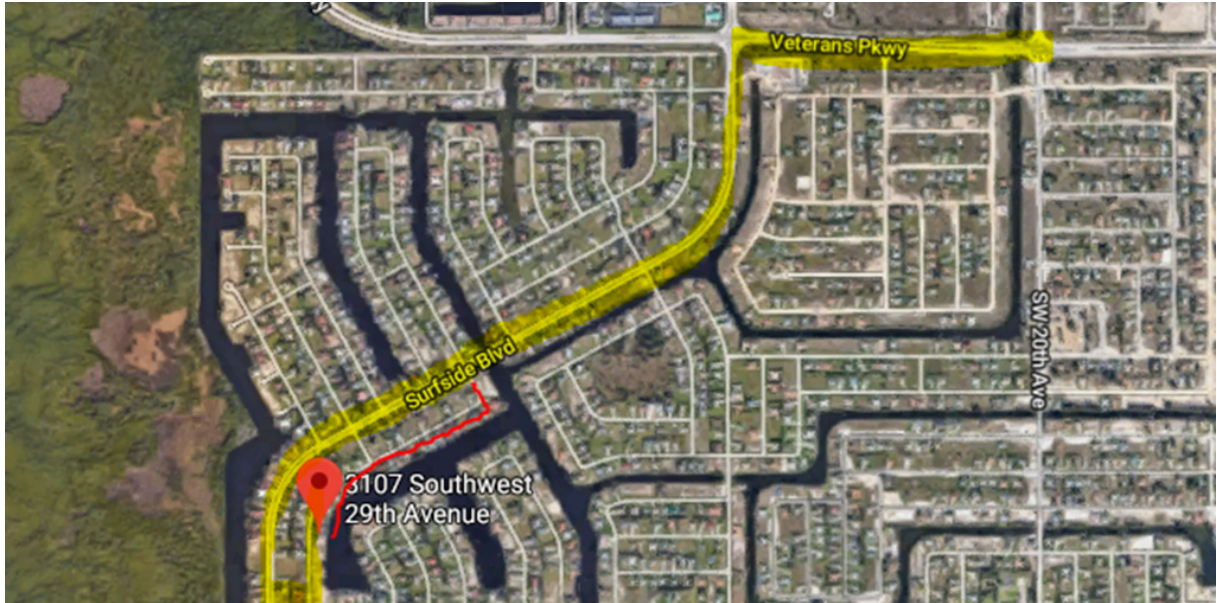
**Route 2: Travel time apprx. 35-40 min via 1. bridge:**

From the airport, take I75 North towards Tampa

Take the first exit towards Cape Coral Daniels PKWY (see picture 1 red line). Then take one of the following roads north to change to College PKWY: US41, Summerlin or McGregor. Stay at College PKWY, cross the bridge to Cape Coral and stay on the Cape Coral PKWY until the end just before the mangroves, here turn right into the Sands Blvd. Then turn left into Beach PKWY and at the end Surfside Blvd starts. Follow this until the 31st Street Ln comes to the right, here turn right and then turn left again into the 29th Ave.



Picture 1: Directions from I75 to the bridges



Picture 2: Directions via Veteran PKWY Bridge 2



Picture 3: Directions via Cape Cora PKWY Bridge 1